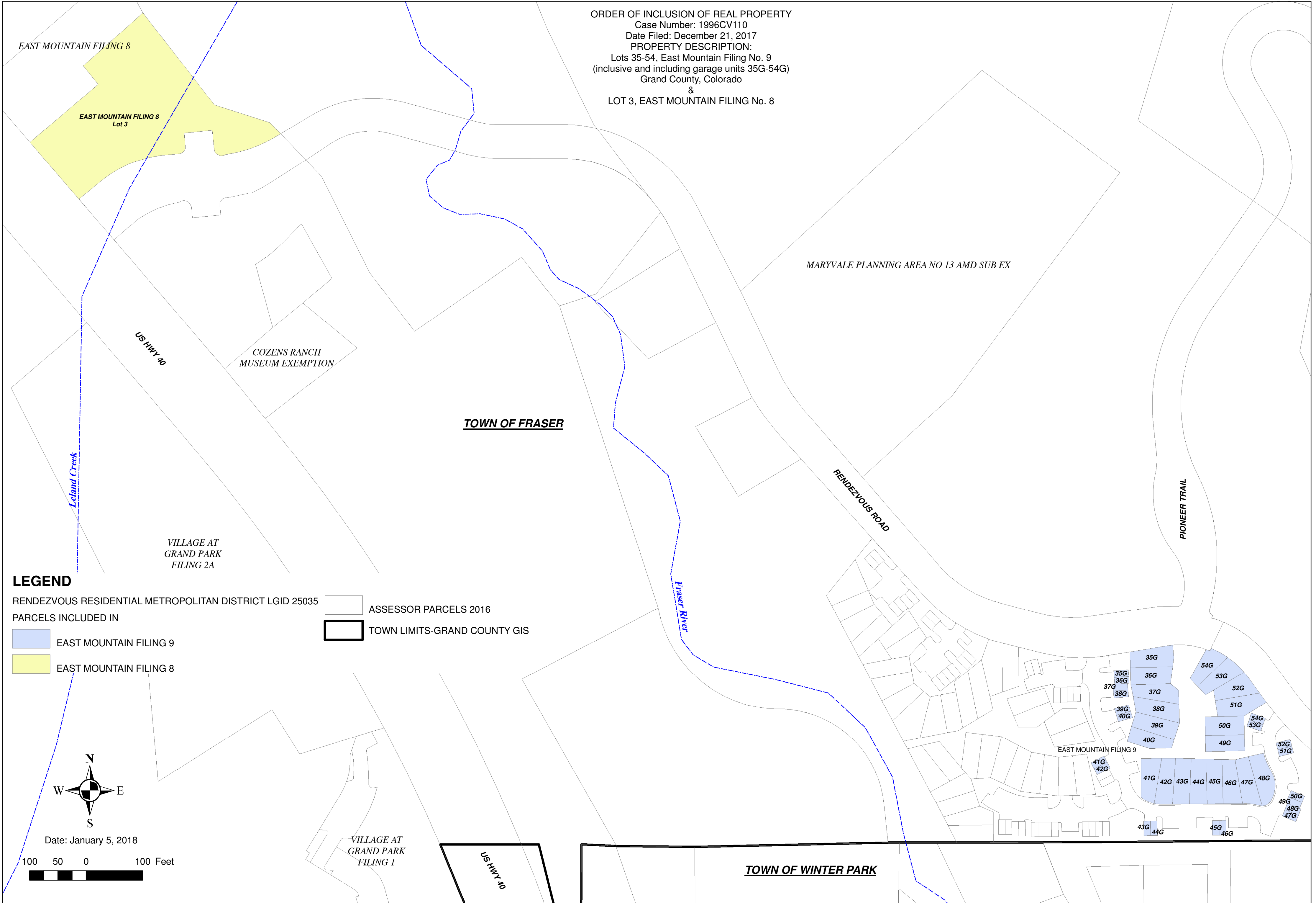


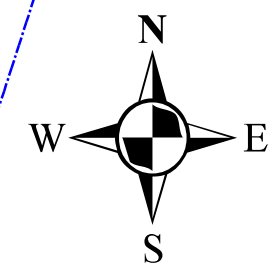
RENDEZVOUS RESIDENTIAL METROPOLITAN DISTRICT LGID 25035

ORDER OF INCLUSION OF REAL PROPERTY
Case Number: 1996CV110
Date Filed: December 21, 2017
PROPERTY DESCRIPTION:
Lots 35-54, East Mountain Filing No. 9
(inclusive and including garage units 35G-54G)
Grand County, Colorado
&
LOT 3, EAST MOUNTAIN FILING No. 8

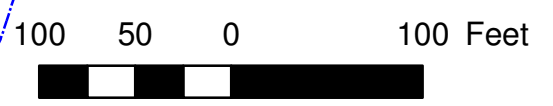


LEGEND

- RENDEZVOUS RESIDENTIAL METROPOLITAN DISTRICT LGID 25035
- PARCELS INCLUDED IN
 - EAST MOUNTAIN FILING 9
 - EAST MOUNTAIN FILING 8
 - ASSESSOR PARCELS 2016
 - TOWN LIMITS-GRAND COUNTY GIS



Date: January 5, 2018



VILLAGE AT GRAND PARK FILING 1

US HWY 40

TOWN OF WINTER PARK

MARYVALE PLANNING AREA NO 13 AMD SUB EX

TOWN OF FRASER

PIONEER TRAIL

RENDEZVOUS ROAD

US HWY 40

COZENS RANCH MUSEUM EXEMPTION

VILLAGE AT GRAND PARK FILING 2A

EAST MOUNTAIN FILING 9

35G 36G 37G 38G 39G 40G 41G 42G 43G 44G 45G 46G 47G 48G 49G 50G 51G 52G 53G 54G

EAST MOUNTAIN FILING 8

EAST MOUNTAIN FILING 8 Lot 3

Leland Creek

Fraser River